

- Vandalproof Metal Cabinet Loudspeaker
- Ideal for Speech & Music
- Ideal for Corridors
- Complies With BS5839 Part 8



The SENTRY range of vandalproof metal cabinet loudspeakers are constructed from epoxy coated high grade steel and can be installed on solid ceilings or walls. Supplied with dual gland entries, which give the installer the option of loop in loop out termination thus avoiding the need for a separate junction box, these cabinets are both robust and aesthetically pleasing. Although our standard finish is White, RAL9016, alternative finishes are available upon request.

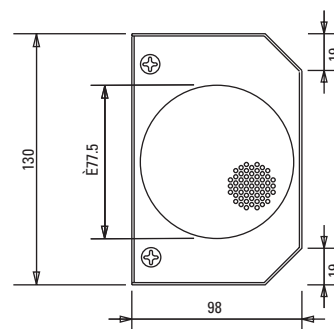
This Bi-Directional unit contains dual cone loudspeakers offering a wide frequency range suitable for both speech and music applications.

In compliance with BS5839 part8, all versions incorporate a ceramic terminal and thermal fuse and are, therefore, suitable for use in voice alarm applications.

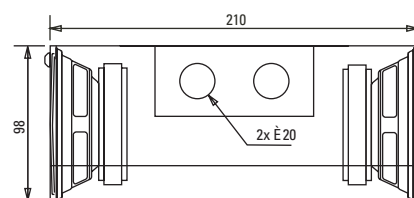
This speaker is supplied complete with:

- Thermal fuse
- Ceramic terminal block
- Optional DC blocking capacitor

Dimensions (mm)



Side View

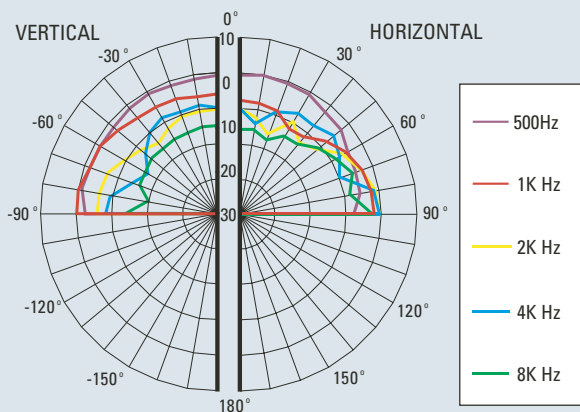


Top View

unit: mm

Technical Specification

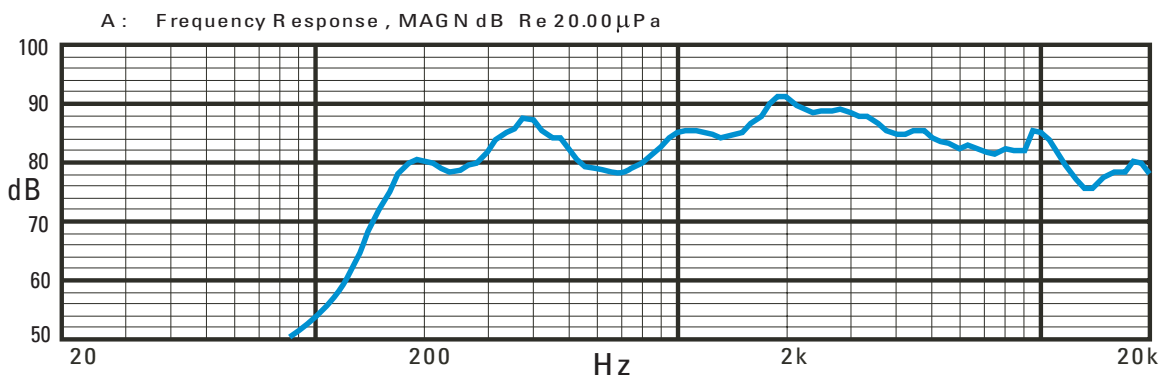
Polar Pattern



Technical Specification:

Power Handling	6 watts
Rated Input	100 volt
Transformer Tappings	6, 3, 1.5, 0.75, 0.25 watts
SPL (1w/1m)	88dB
Max SPL (rated/1m)	96dB
Frequency Response	125Hz – 12kHz
Dimensions (width x height x depth)	210 x 138 x 98mm
Material	Steel Front, Die Cast Rear
Weight (inc. packaging)	2kg
Colour	White RAL9016
Stock Code	200-121-05(C)

Frequency Response



Company Policy is one of continuous improvement, we reserve the right to change specification without prior notice

Protec Fire Detection Plc, Protec House, Churchill Way, Nelson, Lancashire, BB9 6RT