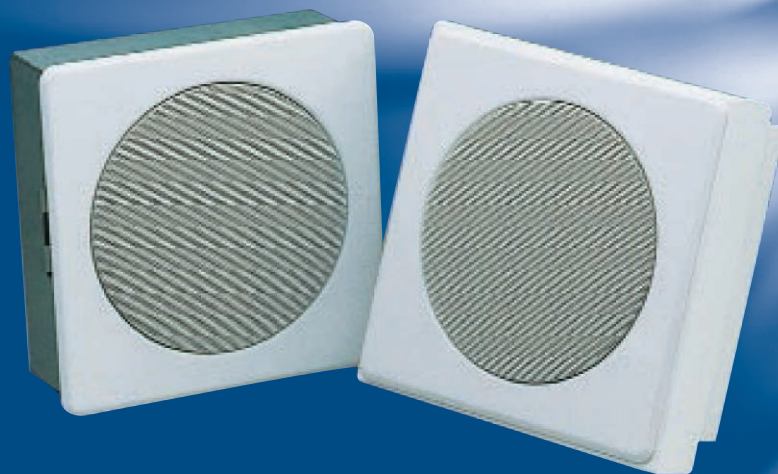


- Thermal Fuse
- Ceramic Terminal Block
- Optional DC Blocking Capacitor



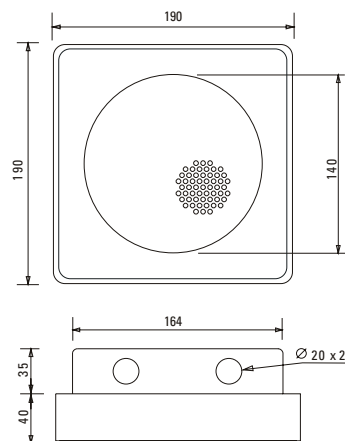
6 Watt Surface Mount Vandal Resistant Metal Cabinet Loudspeaker

This vandalproof metal cabinet loudspeaker is constructed from epoxy coated high grade steel and can be installed on solid ceilings or walls. Supplied with dual gland entries, which give the installer the option of loop in loop out termination thus avoiding the need for a separate junction box, this cabinet is both robust and aesthetically pleasing. Although our standard finish is White, RAL9016, alternative finishes are available upon request.

This cabinet loudspeaker contains dual cone loudspeakers offering a wide frequency range suitable for both speech and music applications.

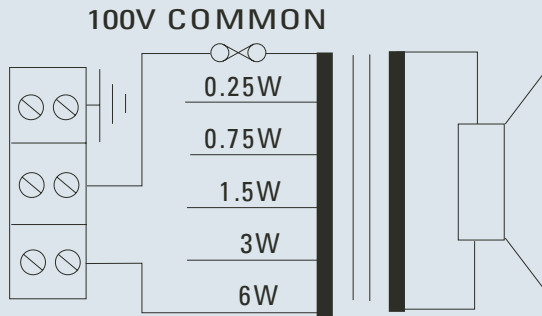
In compliance with BS5839 part8, it incorporates a ceramic terminal and thermal fuse and is, therefore, suitable for use in voice alarm applications.

Dimensions



Technical Specification

Circuit Diagram



Technical Specification:

Power Handling:	6 watts
Rated Input:	100 volt
Transformer Tappings:	6, 3, 1.5, 0.75, 0.25 watts
SPL (1w/1m):	87dB
Max SPL (rated/1m):	94dB
Frequency Response:	200Hz – 18kHz
Dimensions (diameter x depth):	190mm x 190mm X 75mm
Material:	Steel Front, Die cast rear
Weight (inc. packaging):	1.8kg
Colour:	White RAL9016
Stock Code:	200-031-14-C

Frequency Response

