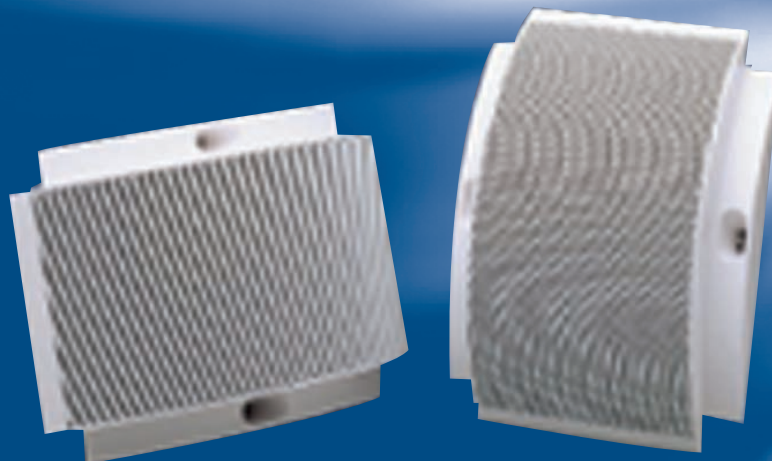


Moulded Cabinet Loudspeaker

- Dual Coned Loudspeaker
- Stylish and Elegant
- Cost Effective
- Easy to Install
- Complies with BS5839 Part 8



The PBC range of cabinet loudspeakers is a real innovation in design and performance. These exceptional loudspeakers are both stylish and elegant and offer a cost effective alternative to the conventional wooden cabinet loudspeaker.

The PBC 6/T is a 6 watt dual coned loudspeaker complete with line transformer, ideally suited for high quality speech and background music. The PBC 10/TCOAX is a 10 watt high performance loudspeaker that incorporates a two way coaxial drive unit and line transformer. The bass response has been extended to give depth and warmth to both music and speech whilst the drive unit has been carefully tailored to give an exceptionally smooth performance but still maintaining a high sensitivity.

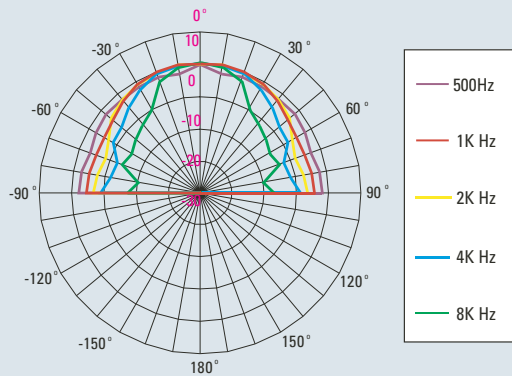
Installation is quick and easy using concealed fixings, making these cabinets ideally suited for applications that require style as well as high performance such as shops, restaurants, hotels, public houses, offices etc.

In compliance with BS5839 part 8, the "C" versions incorporate a ceramic terminal and thermal fuse and are, therefore, suitable for use in voice alarm applications.

This white moulded cabinet loudspeaker with an epoxy coated steel grille offers an alternative to the conventional wooden types available. The ABS plastic has added polymer to avoid discoloration in bright sun light (UV proofed).

Technical Specification

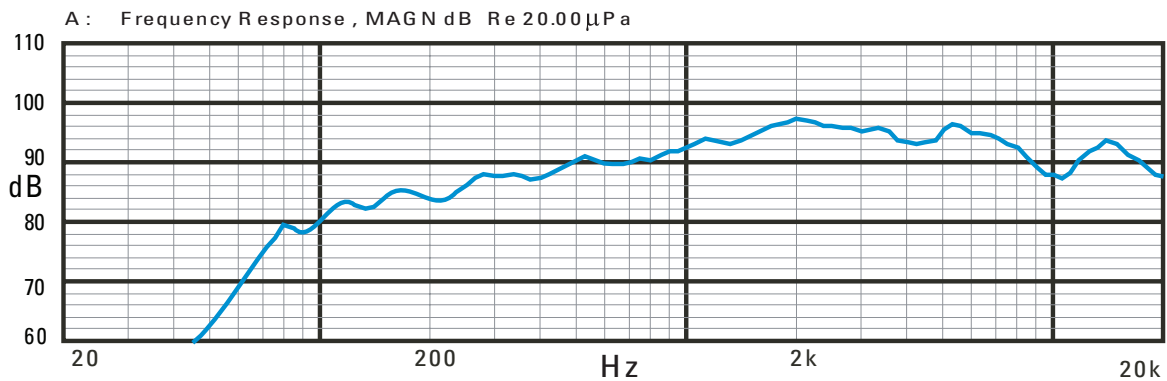
Polar Pattern



Technical Specification:

Rated Power	Watts 6
Tappings 100 volt line	Watts 6 / 3 / 1.5 / 0.75 / 0.25
Transformer Impedance, Ohms, 100V	1.67k/3.33k/6.66k/13.3k/39.9k
Driver impedance, Ohms	8
Effective frequency range, Hz (BS6840)	80 – 20,000
S.P.L. @ 1m, 1 watt, dB	89
S.P.L. @ Full power Octave Bandwidth, dB	99
1 k/2kHz, dB	88/84
Dispersion at 1k/2k Hz, Degrees	160/ 120
Directivity Axial Q factor, 1 k/2kHz	3.7/5.9
Dimensions, front & depth, mm	330 x 240 x 90
Net weight, Kgs	1.30
Colour/Finish	White
Material	ABS moulding with UV inhibitors Steel mesh
Mounting	Keyhole and/or screws
Stock Code	SP231-C

Frequency Response



Company Policy is one of continuous improvement, we reserve the right to change specification without prior notice

Protec Fire Detection Plc, Protec House, Churchill Way, Nelson, Lancashire, BB9 6RT

Tel: 01282 717171 Fax: 01282 717273 Web: www.protec.co.uk Email: sales@protec.co.uk