

ISSUE	DATE	DETAILS OF CHANGE	CHANGED BY
1	14/09/06	First Issue - Based upon the 6300 Operating Manual Issue 3 Rev 6	PD

Warning

This manual assumes that the Silence Alarms control button on your panel is positioned as shown below. If this is not the case, please request the alternative 'Accept' manual.

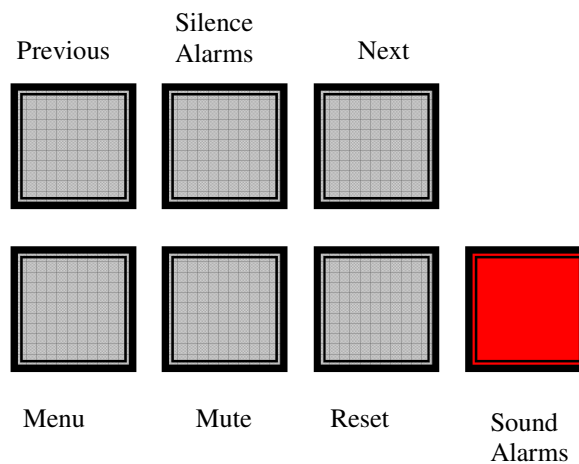


Table of Contents

OVERVIEW	4
1.1 CONTROL PANEL	4
1.2 DEVICES.....	4
CONTROL FUNCTIONS.....	5
2.1 SYSTEM NORMAL.....	5
2.2 FIRE SIGNALS	5
2.3 SILENCE ALARMS.....	5
2.4 RESETTING FIRE EVENTS	6
2.5 SOUND ALARMS	6
2.6 TO ACCEPT THE CURRENT PANEL CONDITION.....	6
USER MENUS	7
PRINT PENDING EVENTS.....	8
VIEW FAULTS	8
VIEW DISABLEMENTS.....	8
ISOLATION FUNCTIONS	9
3.1 ISOLATING AN ADDRESS.....	9
3.2 VIEWING THE ISOLATED ADDRESSES.....	10
3.3 ISOLATING A ZONE	10
3.4 VIEWING THE ISOLATED ZONES	10
3.5 ISOLATE OPGP	11
3.6 VIEWING THE ISOLATED OUTPUT GROUPS	11
3.7 OUTPUT DELAY(s)	12
3.8 CLEARING ALL ISOLATIONS.....	13
3.9 FIRE LINK DISABLEMENT / ENABLEMENT.....	13
SET TIME & DATE.....	14
CLEARING SYSTEM FAULT / CHANGE.....	14
ADVANCED OPTIONS.....	15
6.1 PRINTER FUNCTIONS	15
6.1.1 PRINTING ANALOGUE VALUES.....	16
6.1.2 DEVICES RETURNING ANALOGUE VALUES OUTSIDE A CERTAIN RANGE	17
6.1.3 PRINTING THE EVENT LOG.....	18
6.1.4 PRINTING CURRENT EVENTS.....	18
6.1.5 PRINTING DEVICE DATA.....	19
6.1.6 PRINTING THE PROGRAM MATRIX.....	20
6.1.7 PRINTING THE DELAY DATA	21
6.1.8 CANCELING THE PRINTOUT.....	21
6.2 VIEWING THE EVENT LOG.....	22

6.3 VIEWING ANALOGUE VALUES.....	23
6.4 VIEWING ADDRESS TEXT	23
6.5 DISABLE OUTPUTS	24
6.6 LAMP TEST	24
6.7 WALK TEST	24
APPENDIX A - KEY TO ANALOGUE VALUES.....	25

OVERVIEW

The 5300 panel drives up to two addressable loops with up to 255 addresses each.

An addressable fire alarm system can pinpoint the location of an activated device because each device is associated with an address. The advantage of an addressable system is that up to 255 different addresses are possible on the same pair of wires. Each address is assigned to any of the zones available, zoning is done on site by the commissioning engineer.

1.1 CONTROL PANEL

On the 5300 panel, all user control functions mentioned in this document are accessible after opening the lockable windowed door.

The 5300 panel communication capabilities enable it to be connected to other 5300 or 6300 panels through a secure network. Alternatively, the 5300 panel can be used as a standalone panel. In either case repeat panels can be connected to the system.

1.2 DEVICES

An addressable loop uses sensors instead of trigger devices. There are several different types of addressable sensors available. For a list of available devices refer to appendix A.

2.4 RESETTING FIRE EVENTS

After silencing the alarms and establishing the cause of fire, press the '*RESET*' button.

The panel will perform a lamp test, and then the display shows: -



SYSTEM IN RESET

The fire condition will re-start if an automatic sensor or a manual call point continues to operate.

Note: On a networked system, the reset command is network wide (global), not panel specific.

2.5 SOUND ALARMS

To sound **ALL** alarms, press the '*SOUND ALARMS*' button.

All the alarm outputs will sound, the buzzer will produce a fast pip, and the display shows: -



ALARMS ON

Pressing the '*SILENCE*' button cancels the SOUND ALARMS condition. The '*SILENCE*' button will not silence the alarms if the user has entered the menus eg to view analogue values. Press '*MENU*' to return back one menu level. Repeat until the panel exits the menus and displays the alarm screen shown above.

The SOUND ALARMS function can be initiated at any time, including during alarm or silenced conditions and from within the user menus.

Note: On a networked system, the sound alarms command is network wide (global), not panel specific.

2.6 TO ACCEPT THE CURRENT PANEL CONDITION

If the system has entered a FIRE / FAULT condition, pressing the '*MUTE*' button: -

- 1) Silences the internal buzzer (further fire / fault events will re-activate the internal buzzer).
- 2) Changes fire / fault indications from flashing to steady (further ones will start indications flashing again).

Note: On a networked system, the '*MUTE*' command is panel specific.

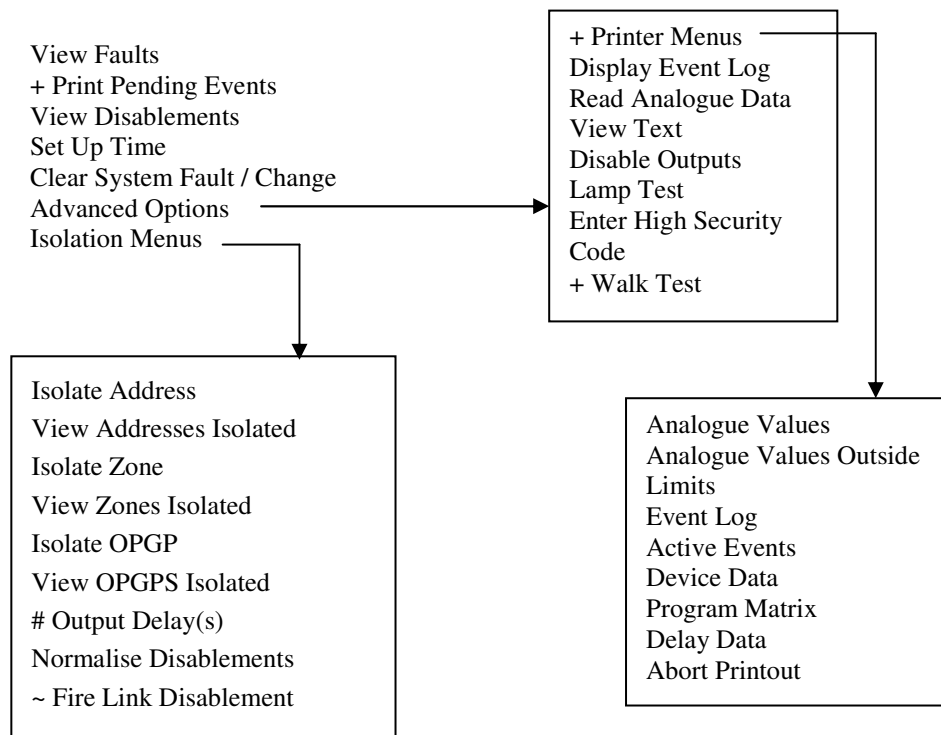
USER MENUS

The following buttons are used for navigating the menu functions: -

- MENU** Used to enter the user menus and to return back a menu level.
- NEXT** Used to move forward through the menu options and within a programming function to increment or change the variable in question.
- PREVIOUS** Used to move back through the menu options and within a programming function to decrement or change the variable in question.
- SILENCE** Used to select a menu option and to accept and move on to the next variable within a programming function.

When changing a value or option within a programming function, a flashing cursor indicates the variable currently being edited.

FIGURE 1: Menu Structure



+ Available if set during commissioning
 ~ Not available if facility provided by keyswitch
 # Available if delays have been programmed

The reception of a fire state from any device automatically exits the user menus. This also occurs if no buttons are pressed for 10 minutes.

When the *'MENU'* button is pressed, the display shows the user *'main menu'* options.

The *'NEXT'* and *'PREVIOUS'* buttons are used to cycle the display through the *'main menu'* options, which are as follows: -

- VIEW FAULTS
- PRINT PENDING EVENTS
- VIEW DISABLEMENTS
- SET UP TIME
- CLEAR SYSTEM FAULT / CHANGE
- ADVANCED OPTIONS
- ISOLATION MENUS

Pressing the *'SILENCE'* button selects the current menu option shown on the display.

Pressing the *'MENU'* will then bring the user out of the menu option and back into the *'main menu'* area.

Pressing the *'MENU'* button whilst in the *'main menu'* exits the user menus.

PRINT PENDING EVENTS

The 5300 panel prints on demand rather than printing events as they occur. Press *'SILENCE'* to select this option and print all the fire and fault events that the panel has stored since the last printout. Un-printed events are indicated by the message *'PRINT'* on the display. This option is only available if the panel has been fitted with a printer. Once printing begins, the panel exits the menus automatically.

Note :-

1. This menu option does not appear if there are no events to print

VIEW FAULTS

Press *'SILENCE'* to view the first fault then use *'NEXT / PREVIOUS'* to cycle through any others.

VIEW DISABLEMENTS

Press *'SILENCE'* to view the first disablement then use *'NEXT / PREVIOUS'* to cycle through any others.

ISOLATION FUNCTIONS

Find the 'ISOLATION MENUS?' option from the 'main menu' using the 'NEXT' and 'PREVIOUS' buttons. Press 'SILENCE' to enter the 'Isolation Menu' through which access to all isolation functions is gained.

The 'Isolation Menus' sub-menu is as follows: -

ISOLATE ADDRESS
 VIEW ADDRESSES ISOLATED (not available if no address isolated)
 ISOLATE ZONE
 VIEW ZONES ISOLATED (not available if no zone isolated)
 ISOLATE OPGP
 VIEW OPGPS ISOLATED (not available if no output groups isolated)
 OUTPUT DELAY(S) (available if delays are programmed)
 NORMALISE DISABLEMENTS
 FIRE LINK DISABLEMENT (not available if this facility is provided by a keyswitch)

If addresses or zones are isolated, the banner text line of the quiescent display is replaced with the isolation information. This will produce the following display: -

```
SYSTEM NORMAL           HH:MM:SS DD/MM/YY
XX ADDR ISOLATED      XX ZONES ISOLATED
```

Note: On a networked system, all isolations and disablements are panel specific.

3.1 ISOLATING AN ADDRESS

Find the 'ISOLATE ADDRESS?' option from the 'Isolation Menus' using 'NEXT' and 'PREVIOUS' buttons. Press 'SILENCE' to enter the menu option. The LCD displays:

```
LOOP XX ADDRESS XXX NORMAL
Location text . . .
```

To isolate an address select the loop number using 'NEXT/PREVIOUS', press 'SILENCE' to move the cursor to the address position. Select the address of the device to be isolated using 'NEXT/PREVIOUS'. Press 'SILENCE' to move the cursor to the 'NORMAL/ISOLATED' position. Pressing 'NEXT/PREVIOUS' toggles the address between 'NORMAL' and 'ISOLATED' states.

Use the 'MENU' button to return to the isolation menus.

3.2 VIEWING THE ISOLATED ADDRESSES

Find the 'VIEW ADDRESSES ISOLATED?' option from the 'Isolation Menus' using the 'NEXT/PREVIOUS' buttons. On pressing 'SILENCE' if any addresses are isolated the LCD displays the first isolated address: -



ADDRESS ISOLATED :-
LOOP XX ADDRESS XX

Pressing either 'NEXT' or 'PREVIOUS' scrolls through any other addresses currently isolated.

If no addresses are isolated, this function becomes unavailable.

Use the MENU button to return to the 'Isolation Menus'.

3.3 ISOLATING A ZONE

Find the 'ISOLATE ZONE?' option from the 'Isolation Menus' using the 'NEXT/PREVIOUS' buttons. Press 'SILENCE' to enter the menu option. The LCD displays:



ZONE XX NORMAL

To isolate a zone select the zone to be isolated using 'NEXT/PREVIOUS'.

Press 'SILENCE' to move the cursor to the 'NORMAL/ISOLATED' position.

Pressing 'NEXT/PREVIOUS' toggles the zone between NORMAL and ISOLATED states.

Use the 'MENU' button to return to the 'Isolation Menus'.

3.4 VIEWING THE ISOLATED ZONES

Find the 'VIEW ZONES ISOLATED?' option from the isolation menu using 'NEXT/PREVIOUS' buttons. On pressing 'SILENCE', if any zones are isolated the LCD displays the first of the isolated zones: -



ZONE ISOLATED :-
ZONE XX

Pressing either 'NEXT' or 'PREVIOUS' scrolls through any other zones currently isolated.

If no zones are isolated this function becomes unavailable.

Use the 'MENU' button to return to the 'Isolation Menus'.

3.5 ISOLATE OPGP

Loop Sounders and other output devices are arranged into output groups. It is possible to isolate individual output groups. Find the 'ISOLATE OPGP ?' option from the isolation menus using 'NEXT/PREVIOUS' buttons. Press 'SILENCE' to enter the menu option. The LCD displays:

```
OPGP 01_          NORMAL
Output Group 1
```

To isolate an output group, select the group number using 'NEXT/PREVIOUS', press 'SILENCE' to move the cursor to the 'NORMAL/ISOLATED' position.

Pressing 'NEXT/PREVIOUS' toggles the output group between 'NORMAL' and 'ISOLATED' states.

Use the 'MENU' button to return to the isolation menus.

3.6 VIEWING THE ISOLATED OUTPUT GROUPS

Find the 'VIEW OPGPS ISOLATED?' option from the 'Isolation Menus' using the 'NEXT/PREVIOUS' buttons. On pressing 'SILENCE' if any output groups are isolated the LCD displays the first isolated output group :-

```
OPGPS ISOLATED :-
OPGP 01 Output Group 1
```

Pressing either 'NEXT' or 'PREVIOUS' scrolls through any other output groups currently isolated.

If no output groups are isolated, this function becomes unavailable.

Use the MENU button to return to the 'Isolation Menus'.

3.7 OUTPUT DELAY(s)

Output delays may have been programmed by the engineer when the system was commissioned. If so the 'Disablement' led and the 'Immediate Outputs Disabled' led will be illuminated. These delays may prevent the sounders being activated until some time after the panel detects a fire. This menu option permits these delays to be over-ridden.

Find the 'OUTPUT DELAY(s)' option from the isolation menus using 'NEXT/PREVIOUS' buttons. Press 'SILENCE' to enter the menu option. The LCD displays:



If delays have been programmed then pressing either 'NEXT' or 'PREVIOUS' toggles between delays 'ON' or 'OFF'. If delays have not been programmed then the delays are 'OFF' and it is not possible to turn them 'ON'.

Selecting 'OFF' overrides the delays and extinguishes the 'Immediate Outputs Disabled' led and, if there are no other disablements on the system, extinguishes the 'Disablement' led.

Selecting 'ON' enables the delays programmed by the engineer and illuminates the 'Disablement' and 'Immediate Outputs Disabled' leds.

Use the 'MENU' button to return to the 'Isolation Menus'.

3.8 CLEARING ALL ISOLATIONS

This menu can be used as a quick method to enable all zones and addresses.

Find the 'NORMALISE DISABLEMENTS?' option from the 'Isolation Menu' using the 'NEXT' and 'PREVIOUS' buttons. On pressing 'SILENCE' the display shows: -



NORMALISE ISOLATED ZONES/ADDRESSES
NO

Pressing either 'NEXT' or 'PREVIOUS' toggles between the 'YES/NO' options available. Pressing 'SILENCE' carries out the selected option and returns the user to the 'Isolation Menu'. Disablements are normalised on pressing SILENCE when 'YES' is selected.

3.9 FIRE LINK DISABLEMENT / ENABLEMENT

This menu allows the fire link to be disabled or enabled. This facility is not available if it is already provided by a keyswitch.

Find the 'FIRE LINK DISABLEMENT?' option from the 'Isolation Menu' using 'NEXT' and 'PREVIOUS' buttons. On pressing 'SILENCE' the display shows: -



FIRE LINK DISABLEMENT ?
NO

Pressing either 'NEXT' or 'PREVIOUS' toggles between the 'YES/NO' options available. Pressing 'SILENCE' carries out the selected option and returns the user to the 'Isolation Menu'. The Fire Link will be disabled on pressing SILENCE when 'YES' is selected. Both DISABLEMENT and FIRE LINK DISABLED LED's will then be switched on.

Note: On a networked system, the fire link disablement is panel specific.

SET TIME & DATE

Find the 'SET UP TIME?' option from the 'main menu' using 'NEXT/PREVIOUS' buttons.
Press 'SILENCE' the LCD displays: -

HH : MM : SS DD / MM / YY
^ ^

Use 'SILENCE' to scroll through all the sections of the time and date (current selection shown by ^). When the pointer is under a variable that requires changing, use the 'NEXT/PREVIOUS' buttons to increment/decrement the variable.

Press 'MENU' to set the new time and return to the user 'main menu'.

Note: On a networked system, the new time and date are sent across the network to all panels (global).

CLEARING SYSTEM FAULT / CHANGE

This option is used to clear a system fault or a system change:

- A system fault occurs when the panel has restarted whilst already powered up (warm start). Either a hardware reset or the software forcing a hardware reset can be the cause of this fault. The FAULT LED and SYSTEM FAULT LED will change from flashing to being steady upon pressing the 'SILENCE' button. The display will show diagnostic information that can be printed (if a printer has been fitted). This diagnostic information should be recorded.
- A system change occurs following the exchange of one or more devices. There is no need to record the diagnostic information following the exchange. The panel needs a fresh start to initialise all the devices. The software will force a hardware reset upon clearing the fault hence restarting the panel (warm start). The buzzer will emit a short beep to signal this. The panel once restarted will require the system fault to be cleared. There is no need to record the diagnostic information following the panel restart.

Both types of faults should be cleared as shown below.

Select the option 'CLEAR SYSTEM FAULT / CHANGE?' from the main menu using 'NEXT/PREVIOUS'.
The display shows: -

CLEAR SYSTEM FAULT/CHANGES ?
NO

Press 'NEXT/PREVIOUS' buttons to select the 'YES' option. Now press 'SILENCE' to clear the fault.

On a system fault (FAULT and SYSTEM FAULT LED's active), the LCD will return to the 'main menu'.

On a system change, the panel will reset itself in order to get a fresh start. This will be followed by a system fault because the panel has restarted whilst already powered up (warm start). This fault should be cleared as described above.

Note: On a networked system, this command is panel specific.

ADVANCED OPTIONS

Find 'ADVANCED OPTIONS?' from the 'main menu' using the 'NEXT' and 'PREVIOUS' buttons. Press 'SILENCE' to enter the 'Advanced Options Menu'.

The user is now presented with a sub-menu through which access to all other user functions is gained.

- PRINTER MENUS (not available if no printer provided)
- DISPLAY EVENT LOG
- READ ANALOGUE DATA
- VIEW TEXT
- DISABLE OUTPUTS
- LAMP TEST
- ENTER HIGH SECURITY (This option is provided for the servicing engineer)
- WALK TEST (Only available if configured upon commissioning to be available)

6.1 PRINTER FUNCTIONS

Find the 'PRINTER MENUS?' option from the 'Advanced Options' menu using 'NEXT/PREVIOUS' buttons.

Note: The printer menus will only be available if the panel has been programmed as having a printer installed. Press 'SILENCE' to enter the 'Printer Menu'.

The user is now presented with a sub-menu through which access to all printer function is gained. The 'Printer Menus' sub-menu is as follows: -

- ANALOGUE VALUES
- ANALOGUE VALUES OUTSIDE LIMITS
- EVENT LOG
- ACTIVE EVENTS
- DEVICE DATA
- PROGRAM MATRIX
- DELAY DATA
- ABORT PRINTOUT

Note: On a networked system, the printer functions are panel specific.

6.1.1 PRINTING ANALOGUE VALUES

Find the 'ANALOGUE VALUES' option from the 'Printer Menu' option using 'NEXT/PREVIOUS' buttons. Press 'SILENCE'. The LCD displays: -

```
PRINT ANALOGUE VALUES ON LOOP XX  
BETWEEN ADDRESSES XXX AND XXX
```

Choose the loop from which the device values are to be printed using 'NEXT/PREVIOUS'. Press 'SILENCE' to move the cursor to the start address value. Use 'NEXT/PREVIOUS' to alter the address start value then press 'SILENCE' to move on to the address finish value and set this in the same way. Press 'SILENCE' to activate the printout. The average value for each address is also printed for comparison.

Example: -

```
*****  
      LOOP 1 ADDRESS DATA 01 - 255  
      10:45:48 14/09/06  
  
ADDR. DEVICE TYPE VAL AVE  
  
 06   OPTICAL   112 120  
  
*****
```

Note: - The analogue values will not be printed if the end address is not set above the start address. To cancel printing, see section 6.1.8 CANCELING THE PRINTOUT. See Appendix A to interpret the values.

Press the 'MENU' button to return to the 'Printer Menus'.

6.1.2 DEVICES RETURNING ANALOGUE VALUES OUTSIDE A CERTAIN RANGE

Find the 'ANALOGUE VALUES OUTSIDE LIMITS' option from the 'Printer Menu' using 'NEXT/PREVIOUS' buttons.

Press 'SILENCE'. The LCD displays: -



- 1) Use 'NEXT/PREVIOUS' buttons to scroll through all of the detector type to be printed. Press 'SILENCE'.
- 2) Use 'NEXT/PREVIOUS' to select either ABOVE or BELOW. Press 'SILENCE'.
- 3) Set the analogue value to the level of interest using 'NEXT/PREVIOUS'.
- 4) Press 'SILENCE' to print. A printout will appear for all loops.

Example printout for 'ALL' devices 'BELOW' an analogue value of 85: -

```

*****
      LOOP 1 ANALOGUE VALUES BELOW 85
      10:45:48 16/01/05

ADDR. DEVICE TYPE  VAL  AVE

01     OPTICAL     55  58
02     OPTICAL     70  70
06     OPTICAL     55  58
11     OPTICAL     55  56

*****
  
```

To cancel printing, see section 6.1.8 CANCELING THE PRINTOUT.

Press 'MENU' to return to the 'Printer Menu'.

6.1.3 PRINTING THE EVENT LOG

Find the 'EVENT LOG' option from the 'Printer Menus' option using 'NEXT/PREVIOUS' buttons. Press 'SILENCE'. The LCD displays: -



PRINT :-
ALL EVENTS ONWARD FROM DD/MM/YY

- 1) Select the type of event to print using 'NEXT/PREVIOUS'.
The choices are ALL EVENTS, ALL FIRES or ALL FAULTS. Press 'SILENCE'.
- 2) Set the start date of the print.
Use 'NEXT/PREVIOUS' to change the day. Press 'SILENCE'.
Use 'NEXT/PREVIOUS' to change the month. Press 'SILENCE'.
Use 'NEXT/PREVIOUS' to change the year.
- 3) When the date is set correctly, press 'SILENCE' to initiate printing.
No printing occurs if an invalid date is entered.

To cancel printing, see section 6.1.8 CANCELING THE PRINTOUT.

Use the 'MENU' button to return to the 'Printer Menus'.

6.1.4 PRINTING CURRENT EVENTS

Find the 'ACTIVE EVENTS' option from the printer functions menu using 'NEXT/PREVIOUS' buttons.

Press 'SILENCE'. The LCD displays: -



PRINT ALL ACTIVE EVENTS

A print of the events in the log which are active (faults which are still present and fires which have not been reset) will begin on the next press of 'SILENCE'.

Also, the menu exits to the 'Printer Menus' on the pressing the 'SILENCE' button.

To cancel printing, see section 6.1.8 CANCELING THE PRINTOUT.

6.1.5 PRINTING DEVICE DATA

Find the 'DEVICE DATA' option from the 'Printer Menus' option using 'NEXT/PREVIOUS' buttons. Press 'SILENCE'. The LCD displays: -



Press 'SILENCE' and the panel will print out device data for all loops, and exit back to the 'Printer Menus'.

Device Data example printout: -

```
*****  
      LOOP 1 ALLOCATION DATA    3 DEVICES  
      09:57:48  16/01/06  
  
      ADD ZN IG OG SENS TYPE      VAL  AVE  
      01 09 01 01 MED  OPTICAL  112  114  
      02 01 04 01 LOW  OPTICAL  117  115  
      03 03 05 01 MED  OPTICAL  115  115
```

To cancel printing, see section 6.1.8 CANCELING THE PRINTOUT.

6.1.7 PRINTING THE DELAY DATA

Find the 'DELAY DATA' option from the printer functions menu using 'NEXT/PREVIOUS' buttons. Press 'SILENCE'. The LCD displays: -



Press 'SILENCE' to print a copy of the full delay matrix and exit back to the 'Printer Menus'.

Example Delay Data printout: -

```

*****
          PROGRAM DELAY DATA
          09:57:48 16/01/00

INPUT
GROUP      OUTPUT GROUP
|
|          01      02      03      04
01      00:00    00:00    00:00    00:00
02      00:00    00:00    00:00    00:00
03      00:00    00:00    00:00    00:00
04      00:00    00:00    00:00    00:00
05      00:00    00:00    00:00    00:00
:        :        :        :        :
27      00:00    00:00    00:00    00:00
28      00:00    00:00    00:00    00:00
29      00:00    00:00    00:00    00:00
30      00:00    00:00    00:00    00:00
31      00:00    00:00    00:00    00:00
32      00:00    00:00    00:00    00:00
          :
          :

INPUT
GROUP      OUTPUT GROUP
|
|          29      30      31      32
01      00:00    00:00    00:00    00:00
02      00:00    00:00    00:00    00:00
03      00:00    00:00    00:00    00:00
:        :        :        :        :
30      00:00    00:00    00:00    00:00
31      00:00    00:00    00:00    00:00
32      00:00    00:00    00:00    00:00
  
```

To cancel printing, see section 6.1.8 - CANCELING THE PRINTOUT.

6.1.8 CANCELING THE PRINTOUT

Find the 'ABORT PRINTOUT' option from the 'Printer Menus' using 'NEXT/PREVIOUS' buttons. Press 'SILENCE'. The LCD displays: -



Use 'NEXT/PREVIOUS' to toggle between 'YES' and 'NO'. To abort the printout, press 'SILENCE' when the 'YES' option is selected. The screen returns to the 'Printer Menus'.

6.2 VIEWING THE EVENT LOG

The most recent 100 events are recorded in the event log along with the time and date at which each occurred.

Find the 'DISPLAY EVENT LOG?' option from the 'Advanced Options' menu using 'NEXT/PREVIOUS'. Press 'SILENCE'. The LCD displays: -

```
XX FIRE EVENTS          XX FAULT EVENTS
RESET EVENT COUNTS? NO  ALL EVENTS
```

This screen shows the number of fire events and fault events since power-up or since the last event count reset. To reset the event counts, toggle between 'YES' and 'NO' using 'NEXT/PREVIOUS'.

- 1) To clear the event counts select 'YES' and press 'SILENCE', select 'NO' otherwise. Notice that the 'Fire Events' count and the 'Fault Event' counts have been cleared. Note: Resetting the counts does not clear the event log.
- 2) Press 'SILENCE' again to select all events or faults only (if active faults are present on the system).

The LCD now shows: -

```
EVENT XX of YY          HH:MM:SS DD/MM/YY
Type of Event           Zone, Loop, Address (if applicable)
```

The event number indicates the order in which the events occurred, EVENT 01 being the most recent. If an event is still active, an asterisk appears by the event number.

Use 'NEXT/PREVIOUS' to increment/decrement the event number. The time and date for each event is shown in the top right-hand corner of the LCD. This is followed on the bottom line by the panel number (if the panel is part of a network system), the event description and the location information (Zone, Loop and Address if event relates to a device on the loop).

To view the text associated with the address of the event press 'SILENCE'. The LCD displays: -

```
EVENT XX of YY          HH:MM:SS DD/MM/YY
                        Location text . . .
```

Press 'SILENCE' again to return to the event type and address display.

Press 'MENU' to return to the 'Advanced Options' menu.

6.3 VIEWING ANALOGUE VALUES

Find the 'READ ANALOGUE DATA?' option from the 'Advanced Options' menu using 'NEXT' and 'PREVIOUS' buttons.

Press 'SILENCE'. The LCD displays: -

LP1	ADD	01	02	03	04	05	06	07	08
	ANVAL	55	50	51	55	50	49	57	56

The analogue value for each address on the top line is displayed directly below it. The values are updated every 3 seconds. As each value is updated a '-' is toggled on and off in front of the address. See Appendix A to interpret the values.

- 1) Use 'NEXT/PREVIOUS' to select the loop then press 'SILENCE' to move the cursor to the ADD position.
- 2) Use 'NEXT/PREVIOUS' to view the previous/next block of eight addresses on the loop of interest.

Pressing 'SILENCE' moves the cursor back to the loop number.

Press 'MENU' to return to the 'Advanced Options' menu.

Note: On a networked system, only the panel's own loop devices analogue values can be viewed (not global).

6.4 VIEWING ADDRESS TEXT

The pre-programmed text associated with each address can be viewed.

Find the 'VIEW TEXT?' option from the 'Advanced Options' menu using 'NEXT/PREVIOUS' buttons. Press 'SILENCE'. The LCD displays: -

LOOP XX	ADDRESS XX	SENS LOW
Text Associated With Address		

The text displayed along the bottom line of the display is that which corresponds to the loop number and address shown on the top line.

- 1) Use 'NEXT/PREVIOUS' to select the loop then press 'SILENCE' to move to the address position.
- 2) Use 'NEXT/PREVIOUS' to select the address then press 'SILENCE' to move back to the loop position.

Press 'MENU' to return to the 'Advanced Options' menu.

Note: On a networked system, only the panel's own loop devices text can be viewed (not global).

6.5 DISABLE OUTPUTS

Select 'YES' and press 'SILENCE' to disable all outputs.
The disablement LED will be lit and the buzzer will sound.
To mute the buzzer, exit all menus and press 'SILENCE'.

Note: On a networked system, the disable outputs menu only applies to the specific panel used. It is not global.

6.6 LAMP TEST

Press 'SILENCE' to initiate the Lamp Test.

All indications and the buzzer will operate for approximately 3 seconds.
The LCD is tested by filling in every dot in the character display one line at a time as follows: -



The reverse of the above will then be displayed. That is, the bottom line of the LCD will be 'filled', with the top line displaying text.

Note: On a networked system, the lamp test menu only applies to the specific panel used. It is not global.

6.7 WALK TEST

This option is only available in the 'user' menu if the panel has been programmed to display it by the commissioning engineer. If this option is available, it will be in the 'Advanced Options' menu.

The 'Walk Test' function performs an automatic silence and reset five seconds after a fire is triggered from a device in test. A specific Zone can be set to be in test.

Note: On a networked system, the Zone in test is panel specific. A fire from another panel with the same zone number WILL trigger the fire alarm.

The outputs affected during Walk Test mode will have been pre-programmed during commissioning as 'No Control Outputs' activated or 'No Outputs Activated'.

Find the 'WALK TEST?' option from the 'Advanced Options' menu using 'NEXT/PREVIOUS' buttons.



Select a zone to be put into test. On the right of the selection the following message appears 'USE ACCEPT TO START'. On pressing 'SILENCE' the message will change to 'NOW IN WALK TEST'.

Use the 'MENU' button to return to the 'Advanced Options' menu.

The test is terminated by selecting 'OFF', the panel will perform an automatic reset and lamp test and the TEST indication will be extinguished. It will then return to the 'Advanced Options' menu.

Note: On a networked system, the test fires are not sent across the network. They are panel specific.

APPENDIX A - KEY TO ANALOGUE VALUES

ANALOGUE THRESHOLD LEVELS				
SENSITIVITY	FAULT	NORMAL	PRE-ALARM	FIRE
TYPE '0' (AN MCP / AN SOUNDER / AN INTERFACE)				
Medium	0 - 80	81 - 192	N / A	193 - 255
TYPE '1' (IONISATION SMOKE SENSOR)				
Medium	0 - 8	9 - 152	153 - 184	185 - 255
TYPE '2' (TEMPERATURE SENSOR)				
Medium (68°)	0	1 - 196	N/A	197 - 255
TYPE '3' (OPTICAL SENSOR)				
Medium	0	1 - 128	129 - 168	169 - 255