



# Upgrading 6300 Panel

## 6300 Panel - 6500 Panel Exchange

### Upgrade Process

The Protec 6300 fire detection control panels utilise technology that exceeds 20+ years old, which has now unfortunately become obsolete. Together with the changes in design standards BS5839 and EN54 regulations, Protec has carefully designed and engineered their new range of panels to support existing systems.

As you will appreciate, technology has moved forward with older electronic components becoming increasingly challenging to obtain and in numerous cases, component manufacturers no longer supporting the products. Protec Fire Detection plc will continue to provide either a “service replacement” or “repair service” to existing service clients where possible. However several of the components, which are supplied to Protec to build the 6300 circuit boards, have now become obsolete, resulting in service stocks becoming limited.

In view of the above, Protec have ensured that our latest generation of Digital Algo-Tec™ Addressable fire detection products 6500 are fully “backwards compatible” and can be retrofitted into existing 6300 panel housing. This backwards compatibility will ensure that only the internal gear tray and door assembly containing the circuit boards are upgraded, with all the existing loop wiring and devices (sensors, interfaces, sounders, shutdowns) being fully supported except the 6300 Loop LCD. The 6300 data file can be imported into a 6500 to ensure the exchange is seamless.

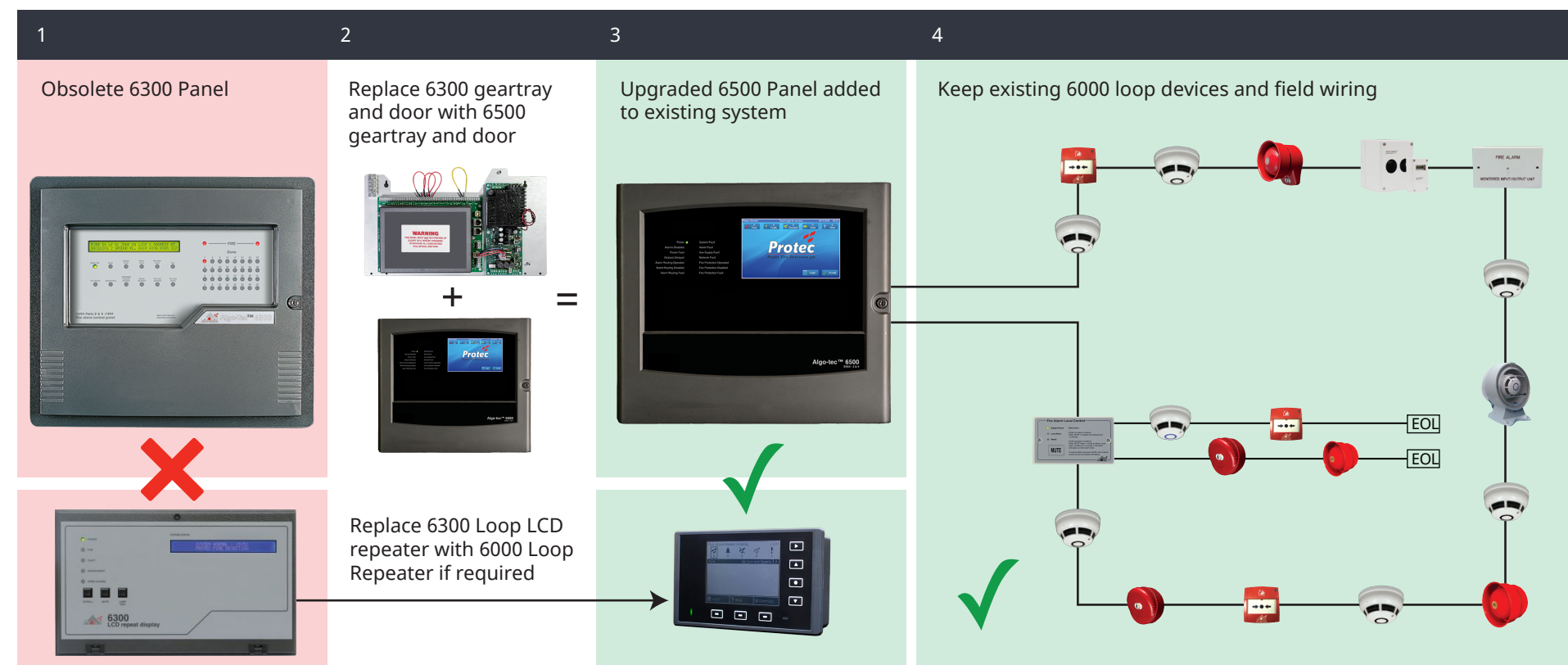
Our ability to retrofit the latest control panel technology into existing 6300 panels, will ensure that in the event of any difficulties in obtaining or repairing 6300 circuit boards, the existing fire detection system can easily be retained without the need for expensive full system upgrades or the inevitable damage to building structures and finishes.

#### Key Points

- ✓ Utilises the existing field wiring
- ✓ Utilises the existing panel housing
- ✓ Fully compatible with existing loop devices
- ✓ Fully compatible with ALL existing sounders
- ✓ Fully compatible with existing interfaces / shutdowns
- ✓ Enhanced features
- ✓ BS5839 & EN54 compliant
- ✓ Discount for current maintenance clients
- ✓ Extended **5 Year Parts Warranty\***
- ✓ Protec Cloud Preparation\*

\* Whilst under a maintenance contract with Protec Fire Detection PLC

### Simple Process for Upgrade



### Additional Notes

**Power Supplies** - If the 6300 has an internal power supply a 6500 internal PSU will require installing.

**Secure Networks** - The 6500 will not work on 6300 secure networks. If multiple 6300 Panels are networked the 6500 would only be able to communicate to 6300 panels through interfaces for fire and fault signals. Alternatively all 6300 panels can be upgraded to 6500.

**5000 Protocol** - Any panels running 5000 protocol will require devices exchanging to 6000 protocol.

**Loop LCD Repeater** - The 6300 LCD Loop repeater is not supported. It would need to be replaced with the latest 6000/LOOP/REPEATER.

**RS232 Equipment** - Support for existing Hercules and Pager systems.

### Upgrading Panel Options

Product Description	Order Code
6500 2 LOOP, PRINTER, CHARGER	6021-301
6500 4 LOOP, PRINTER, CHARGER	6041-301
6500 4 LOOP, CHARGER	6040-301
6500 4 LOOP	6040-001
6500 NETWORK, 2 LOOP, PRINTER, CHARGER	6521-301
6500 NETWORK, 4 LOOP, PRINTER, CHARGER	6541-301
6500 NETWORK, 4 LOOP, CHARGER	6540-301
6500 NETWORK, 4 LOOP	6540-001

If you require any further information please contact our service department on 01282 717865 or email: [service@protec.co.uk](mailto:service@protec.co.uk)