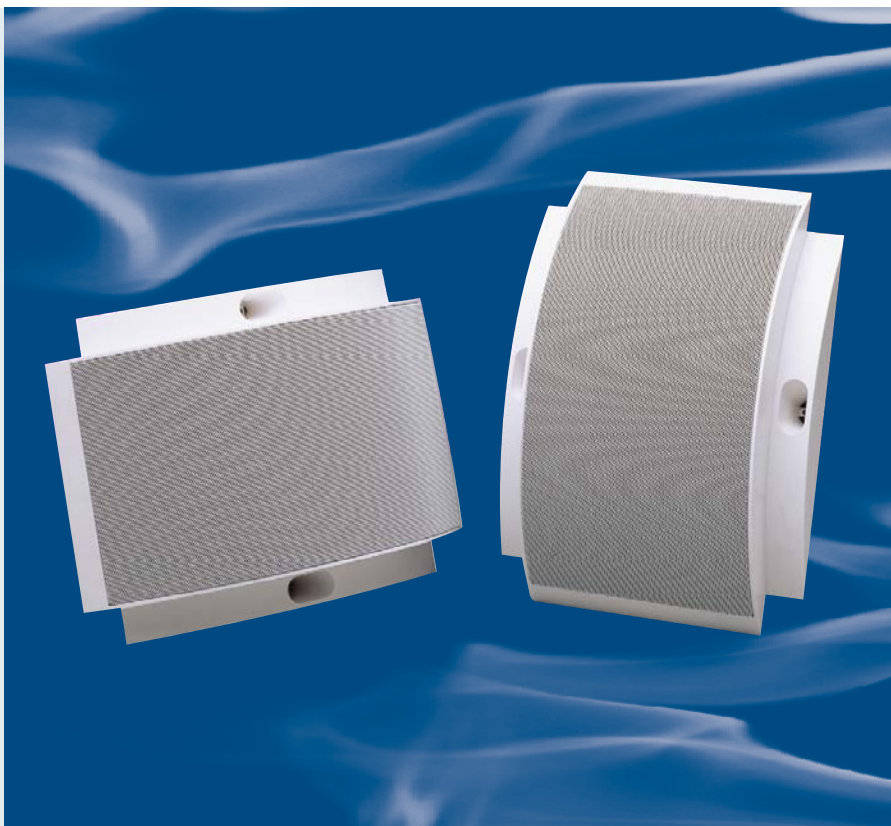


6 Watt Moulded Cabinet Loudspeaker

- Dual Coned Loudspeaker
- Stylish and Elegant
- Cost Effective
- Easy to Install
- Steel Mesh, ABS Body



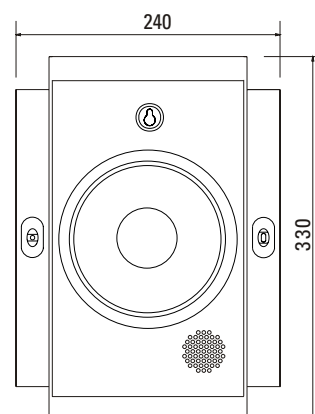
This cabinet loudspeaker is a real innovation in design and performance. These exceptional loudspeakers are both stylish and elegant and offer a cost effective alternative to the conventional wooden cabinet loudspeaker.

This is a 6 watt dual coned loudspeaker complete with line transformer, ideally suited for high quality speech and background music.

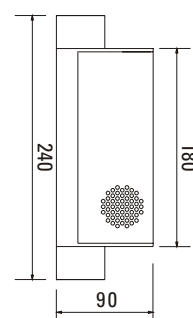
Installation is quick and easy using concealed fixings, making these cabinets ideally suited for applications that require style as well as high performance such as shops, restaurants, hotels, public houses, offices etc.

This white moulded cabinet loudspeaker with an epoxy coated steel grille offers an alternative to the conventional wooden types available. The ABS plastic has added polymer to avoid discolouration in bright sun light (UV proofed).

Dimensions (mm)

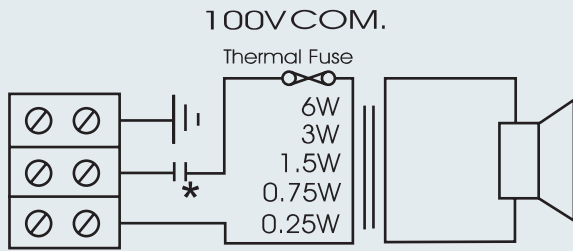


Top View



Technical Specification

Circuit Diagram

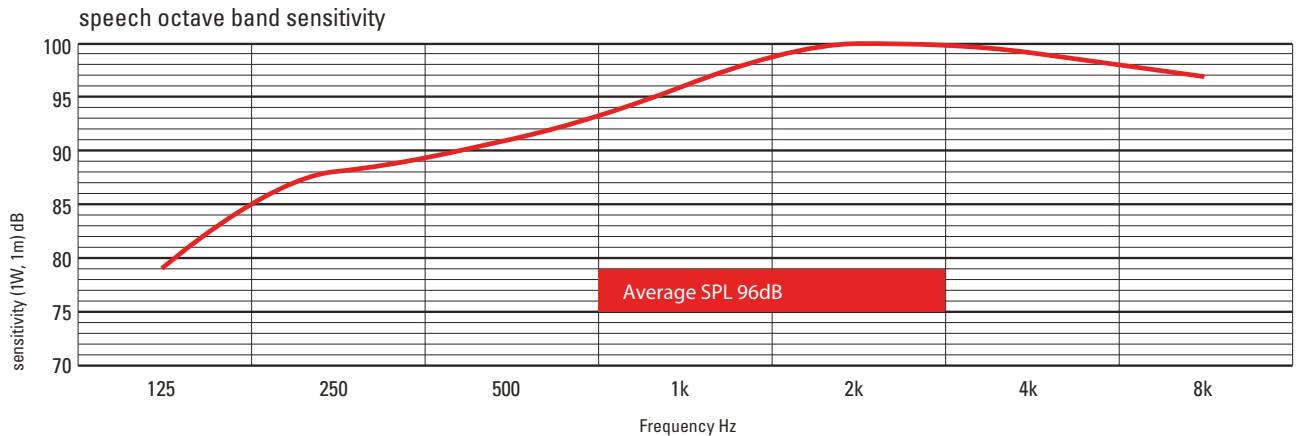


*with capacitor

Technical Specification:

| | |
|-------------------------|-----------------------------|
| Power Handling | 6 watts |
| Rated Input | 100 volt |
| Transformer Tappings | 6, 3, 1.5, 0.75, 0.25 watts |
| SPL (1w/1m) | 96dB |
| Max SPL (rated/1m) | 104dB |
| Frequency Response | 160Hz – 18kHz |
| Dispersion at 1k/2kHz | 160° / 120° |
| Dimensions (mm) | 330(W) x 240(H) x 90(D) |
| Material | Steel Mesh, ABS Body |
| Weight (inc. packaging) | 1.15 kg |
| Colour | White |
| Stock Code | SP2315 |

Frequency Range



Company Policy is one of continuous improvement, we reserve the right to change specification without prior notice

Protec Fire Detection Plc, Protec House, Churchill Way, Nelson, Lancashire, BB9 6RT

© 2013 - 2016 Protec Fire Detection plc