

- Compact design
- Standalone applications up to 8 lines
- Fully compliant to BS 5839-9:2021
- Integrated Assist Call and acknowledge meeting BS 8300
- 1.2A Integral PSU
- Full duplex operation
- Wall mount enclosure
- Lockable handset cover



An EVCS is a fixed, secure, bi-directional, full duplex voice communication system to assist fire fighters during emergencies in high rise buildings or large sites where radio communication cannot be guaranteed to work due to interference from the fire plasma.

The EVX-228S Solo range of master stations is perfect for smaller installations of up to 8 lines. It requires no set up and is easy to install with a single radial circuit to each outstation.

The full range of EVX outstations are compatible and include Type A outstations, Type B Outstations, Type C outstations and jack points for use in far and middle east applications.

Lines auto identify by flashing Red for EVCS calls, Blue for assist calls or flashing Green for connected calls as detailed in BS 5839-9:2021.

The Assist Call range of emergency assistance alarms is fully compatible. It has become very popular to add these devices as an integrated system. This has several benefits namely:- fault monitored wiring, fully line powered (No mains supply), battery back-up via the master station.

BS 8300 requires that audible and visual feedback should be provided to indicate that, when the alarm has been operated, the emergency assistance call has been acknowledged and actioned. Assist Call meets this requirement and will return to alarm if not reset within two minutes.

Order codes	Description
EVX-228S-2	2 Line Solo Master Station
EVX-228S-4	4 Line Solo Master Station
EVX-228S-8	8 Line Solo Master Station

Technical Specification

Power Supply and Charger

AC input	230VAC +/- 10% 50/60Hz
Internal supply	5V, 16V, 27V DC
Supply	Monitored Open, Short, Fuses, High Impedance
Protection	Deep discharge, Short, Thermal
Battery type	1 x 12V 7AH VRSLA
Mains fuse	240V 1A HRC
Battery fuse	750mA PTC
Charge current	400mA

Inputs

Lines	2-8 in 2 line blocks
Remote enable	Short to use
End of line	10KΩ

Outstation Cables

Type	Standard*/Enhanced
Cores	1 x 2 core radial 1mm or 1.5mm
Distance	500m from master station

Outputs

Number	2, Fault & In use
Fault relay	1 x Volt free NC, Com 30V DC 1A
In use relay	1 x Volt free NO, Com 30V DC 1A

Controls

Buttons	8 Zone keys
Zone LEDs (x8)	RGB Status LEDs
Fault LEDs	3, PSU, System, General
Supply LEDs	2, AC, DC present

Standards Compliance

EMC	EN 55035:2017+A11:2020, EN 55032:2015+A1:2020
LVD	EN IEC62368-1:2020+A11:2020
Product Family	BS 5839-9:2021, BS 9999:2017, BS 8300-2:2018

Dimensions

	Panel	Bezel	Cutout
Height	300mm	350mm	305mm
Width	350mm	400mm	355mm
Depth	95mm	1mm	85mm
Weight	4.2Kg		

*Refer to BS5839-9:2021 for exceptions

Note

Maximum system capacity - 8 lines.

Not compatible with EVX-EX8 System Expander Panel.
Cannot be used with EVX-228 Repeater Station.

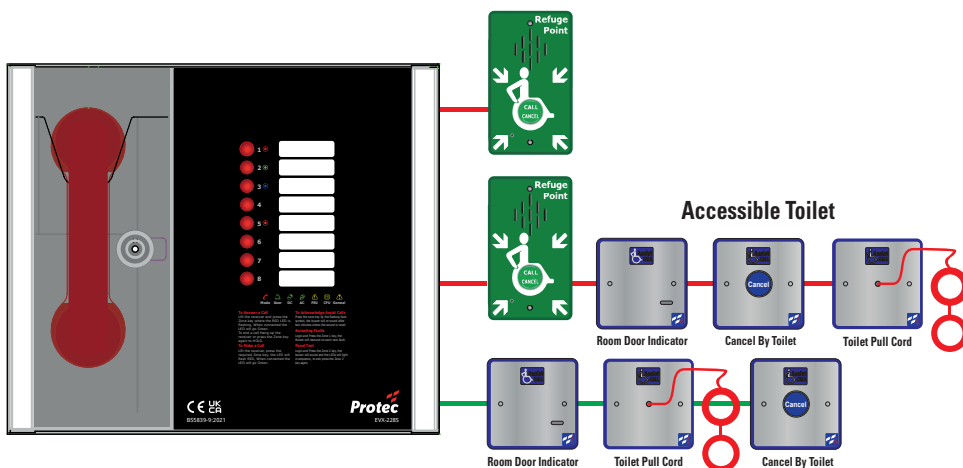
The EVX-228S is a self contained enclosure housing a master handset, one to four dual line cards, power supply & battery charger and can be surface or flush mounted (using the EVX-CBZ Bezel).

The case is made from powder coated zinc, with a smoked perspex door covering the handset. 20mm cable knock-outs are provided for all necessary cables as well as space for the backup 12V VRSLA battery.

The master station is microprocessor controlled, but requires no programming on site; the panel is fitted with end of line resistors which are simply moved to the end of line when an outstation is connected.

Lines can share an accessible toilet and Type B refuge point on the same line, as the front panel RGB indicators identify which is calling, with refuge overriding emergency assist calls as required by BS 5839-9:2021.

Typical Schematic



Cable Key

- 1 off 2 Core 1.5mm CSA Standard Rated Fire Cable
- 1 off 2 Core 1mm CSA PVC Minimum